



neloche

making innovation fly



Meloche Group Corporate Presentation



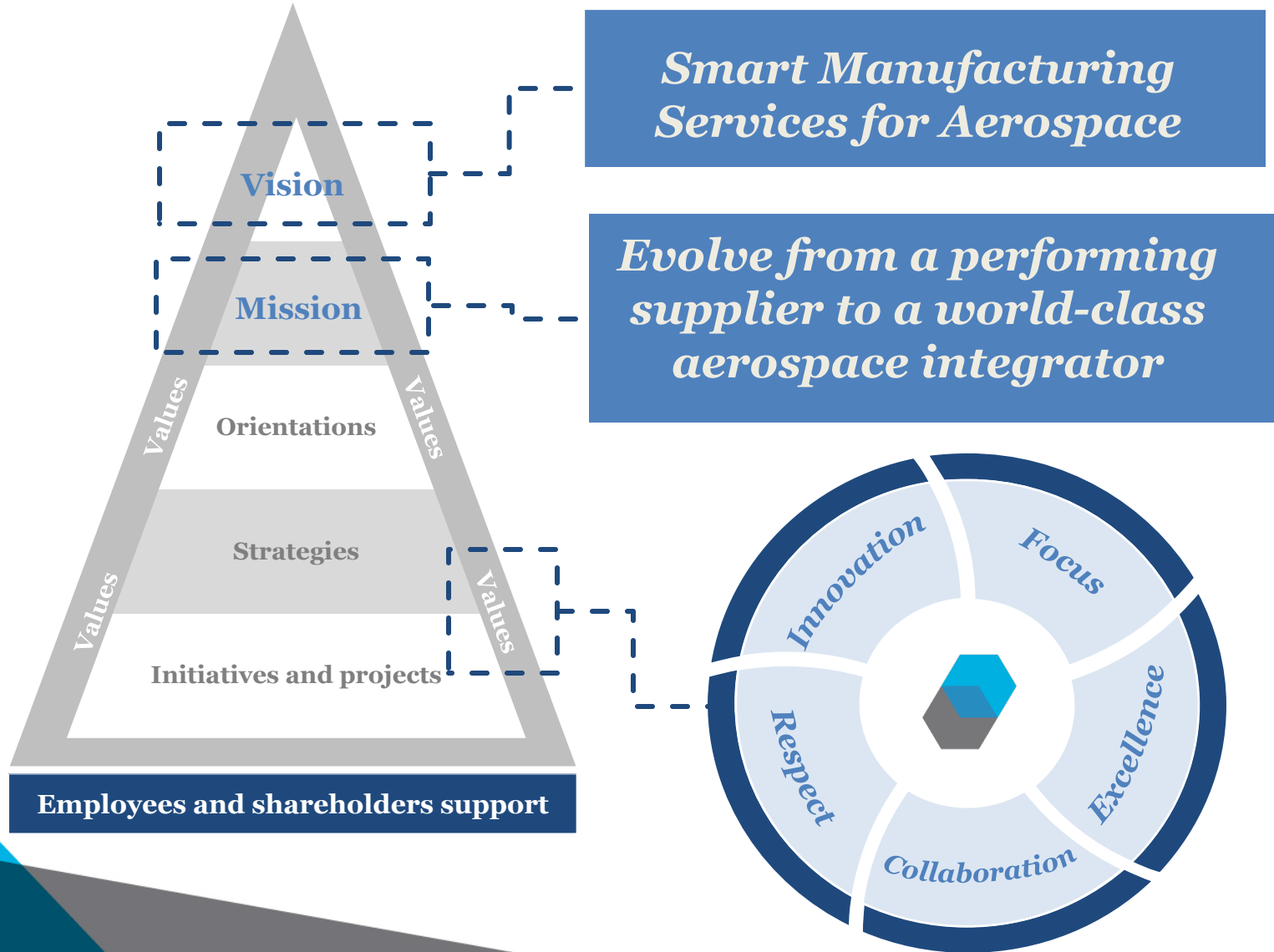
Agenda

1. Company profile
2. Aerostructure products
3. Aeroengine products
4. Manufacturing capabilities
5. Strategy
6. Contact information

1. Company profile

1. Company profile:

Vision – Mission - Values



1. Company profile:

Customers

Aerostructure

BOMBARDIER



Aeroengine



Pratt & Whitney Rzeszów

1. Company profile:

Multi-site business

4 manufacturing plants near Montreal, Quebec, Canada

90 000 sq. ft total



1. Valleyfield plant #1: 37 000 sq.ft.

CNC Machining, Engineering

2. Valleyfield plant #2: 15 000 sq.ft.

Special processes and assembly

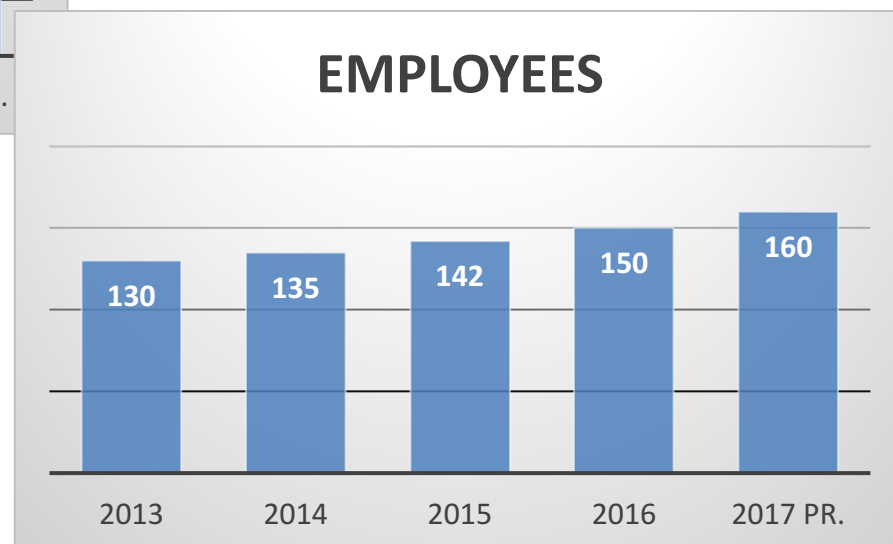
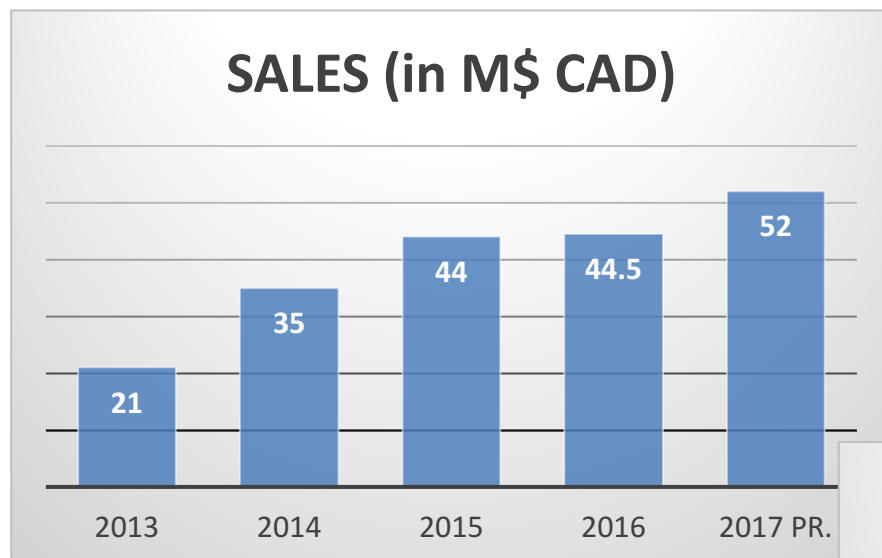
3. Valleyfield plant #3: 22 000 sq.ft.

*Administration, Inventory management
and future expansion*

4. Bromont plant: 16 000 sq.ft.

1. Company profile:

Key numbers



1. Company profile:

Quality Certifications



CERTIFICAT D'ENREGISTREMENT

La présente atteste que
Groupe Meloche inc.
 491, boul. des Érables, Valleyfield, Québec J6T 6G3 Canada

The above organization has been notified in accordance with the requirements of AS91001:2013. SAI Global Certification Services Pty Ltd (SAI) SAI Canada Limited based in Toronto, Ontario, Canada is accredited under the Industry Controlled Other Party (ICOP) scheme. The certificate is issued at the accreditation location in Toronto, Canada.

possède un
Système de Management de la Qualité
 qui respecte les exigences de la norme
ISO 9001:2008 + AS9100C
 relativement à la portée d'enregistrement suivante
Usinage de précision, peinture et assemblage. Traitement sur aluminium (dépôt de chromate et anodisation).

N° de certificat : CERT-0085130 Date de certification initiale : 10 février 2009
 N° de dossier : 001943 Date de certification actuelle : 8 février 2015
 Date d'émission : December 10, 2014 Date d'échéance du certificat : 7 février 2018




Chris Joseph
 Président
 OMI SAI Canada Limited

Samer Chaouk
 Directeur de la politique, du risque et de certification





This certificate is granted and awarded by the authority of the Nadcap Management Council to:

Meloche Group Inc.
 491 Boulevard des Erables
 Valleyfield, QC J6T 6G3
 Canada

This certificate demonstrates conformance and recognition of accreditation for specific services, as listed in www.eAuditNet.com on the Qualified Manufacturers List (QML), to the revision in effect at the time of the audit for:


NonDestructive Testing



Certificate Number: 9461174900
 Expiration Date: 31 January 2018

Joseph G. Pinto
 Executive Vice President and Chief Operating Officer

Performance Review Institute (PRI) | 161 Thorn Hill Road | Warrendale, PA 15086-7527




This certificate is granted and awarded by the authority of the Nadcap Management Council to:

Meloche Group Inc.
 491 Boulevard des Erables
 Valleyfield, QC J6T 6G3
 Canada

This certificate demonstrates conformance and recognition of accreditation for specific services, as listed in www.eAuditNet.com on the Qualified Manufacturers List (QML), to the revision in effect at the time of the audit for:

Chemical Processing



Certificate Number: 9461170018
 Expiration Date: 31 July 2018

Joseph G. Pinto
 Executive Vice President and Chief Operating Officer

Performance Review Institute (PRI) | 161 Thorn Hill Road | Warrendale, PA 15086-7527





Programme des marchandises contrôlées (PMC) / Controlled Goods Program (CGP)

Certificat / Certificate of Registration issued to
GRUPE MELOCHE INC.

Le présent certificat est délivré à la personne ou personnes désignées ci-dessus en vertu de la Loi sur le régime des marchandises contrôlées. / This certificate is issued to the person or persons named above in accordance with the Controlled Goods Act.




1. Company profile:

Ownership

Majority
shareholder

**Meloche family and
key employees**

12 billion \$
equity fund



1 billion\$
equity fund

ACE MANAGEMENT
INVESTISSEUR EN CAPITAL

2 billion \$
equity fund

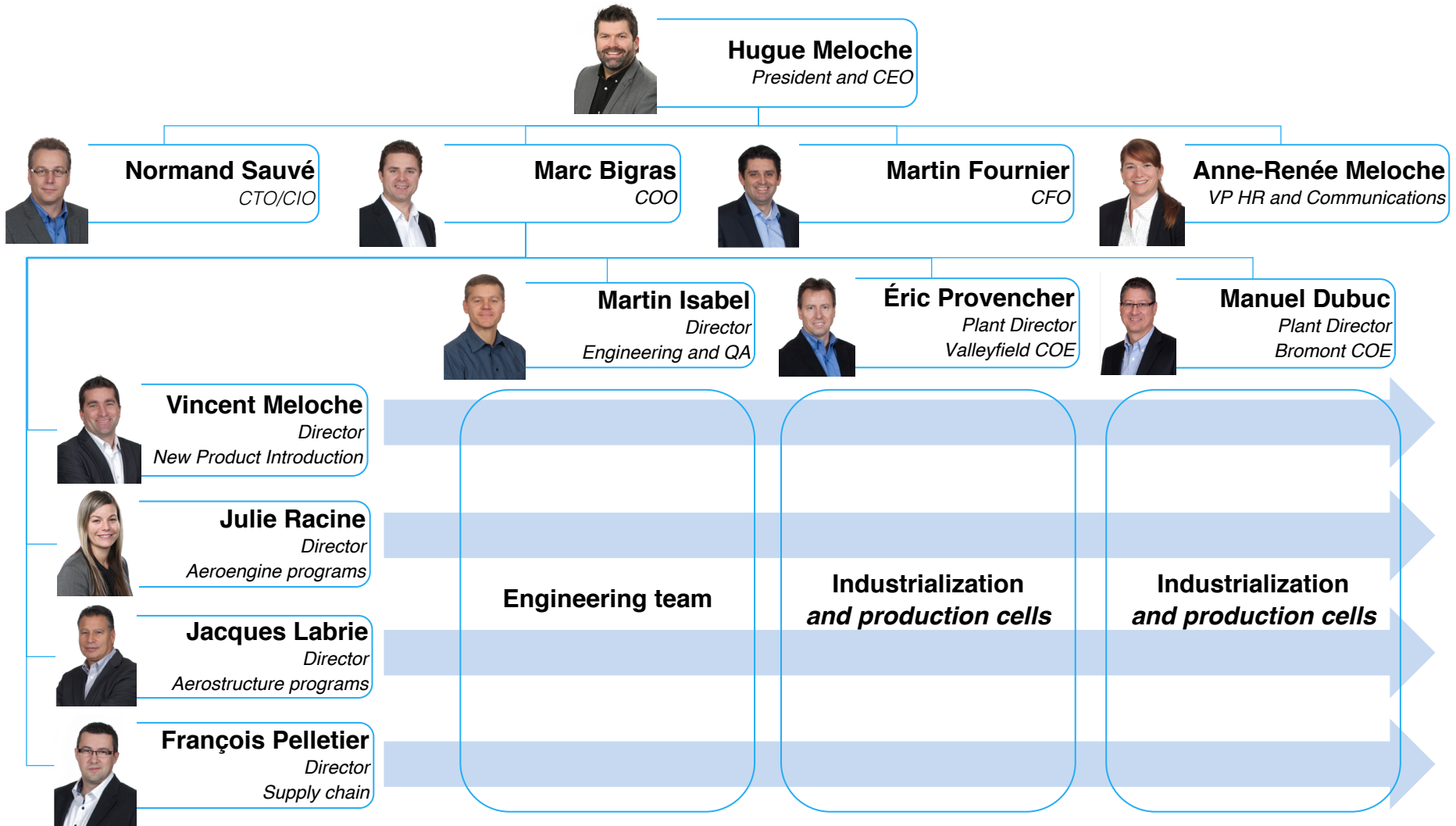
FONDACTION
CSN POUR LA COOPÉRATION
ET L'EMPLOI



1. Company profile:

Management

Average age of management: 44



1. Company profile:

Corporate governance

Board of directors



Pierre Grandmaison
Chairman of the board



Réjean Meloche
Honorary Chairman of the board and
founder



Hélène Séguinotte
Country Delegate, SAFRAN



Hugue Meloche
President & CEO, Meloche Group



Jacques St-Laurent
Corporate Director



Guy Leblanc
Corporate Director



André Viau
Portfolio Manager, Fond de solidarité
FTQ



Marc Bigras
Vice President & COO

Compensation Committee

Jacques St-Laurent, President
Pierre Grand'Maison
Hélène Séguinotte
Hugue Meloche

Audit Committee

Guy Leblanc, President
Pierre Grand'Maison
André Viau
Hélène Séguinotte

2. Aeroengine products

2. Aeroengine products

Aircraft engine oil nozzles



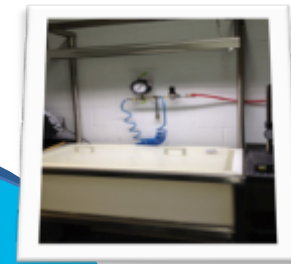
2. Aeroengine products

Oil nozzles – integrated processes

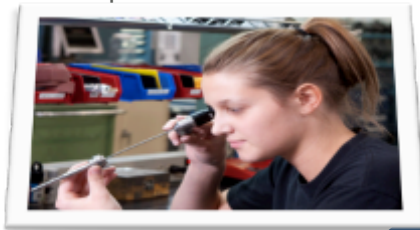
Processing



Pressure test



Inspection



Flow target test



Laser marking
Tumbling



FMS Machining



Packaging



Cleanliness test

2. Aeroengine products

Hard metal center of excellence

- ◆ Machined slugs used for airfoils manufacturing
- ◆ Waspalloy sleeve for variable-pitch airfoils



Meloche Bromont facility

*Machined slugs (inconel,
titanium, A286)*

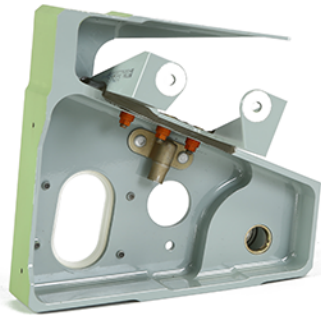
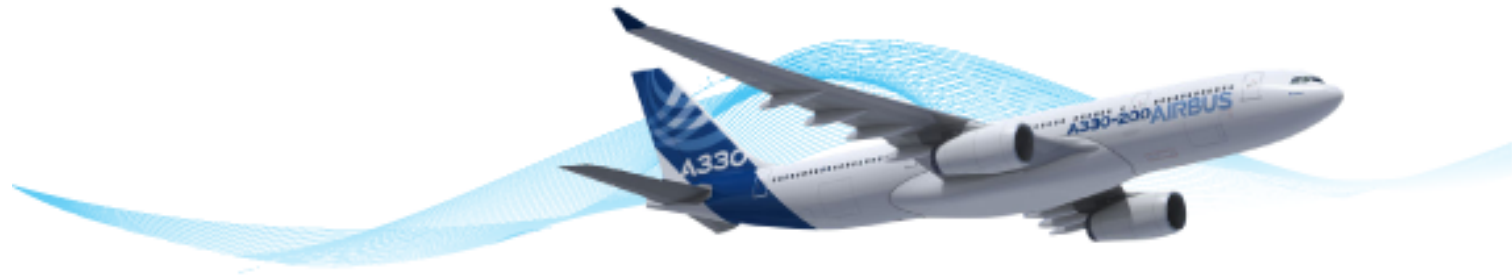


*Waspalloy
sleeve*

3. Aerostructure products

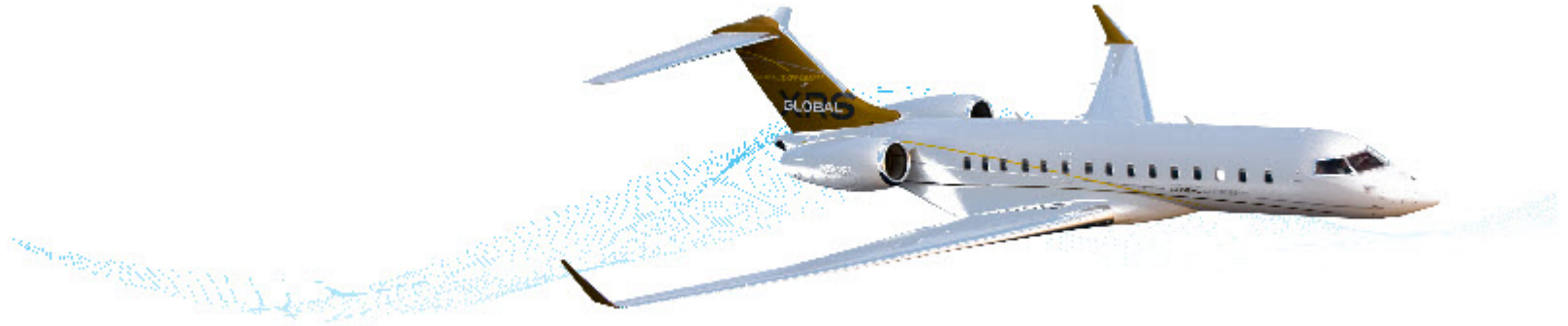
3. Aerostructure products:

Aircraft mechanical assemblies



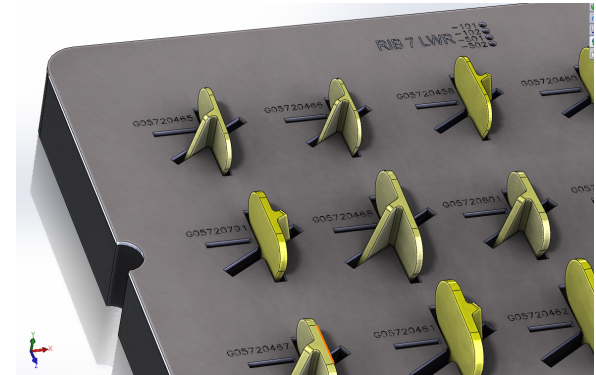
3. Aerostructure products:

Aircraft structural components



3. Aerostructure products:

Wing cleats



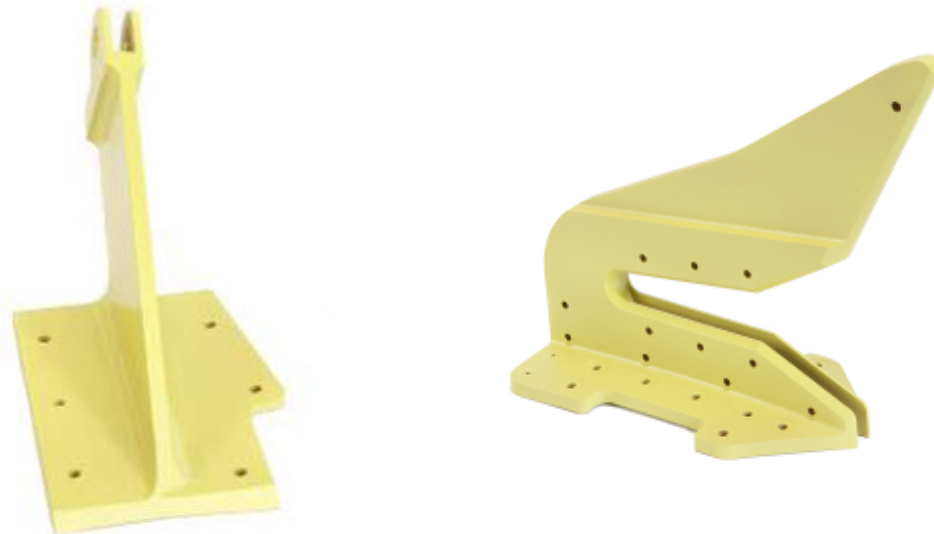
3. Aerostructure products:

Fuel system components



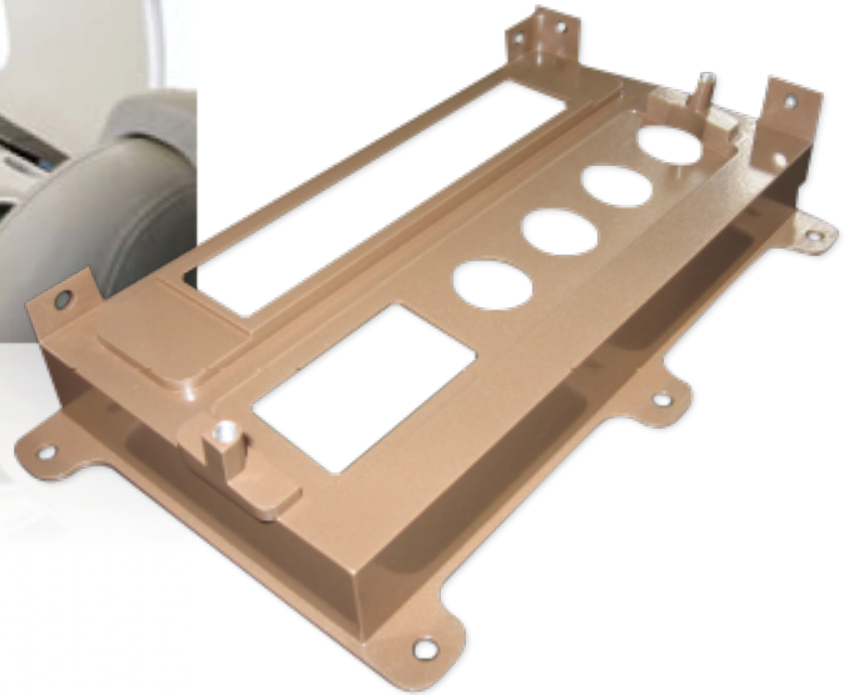
3. Aerostructure products:

Helicopter structural components



3. Aerostructure products:

Aircraft interiors components



4. Manufacturing capabilities

4. Manufacturing capabilities:

Vertical integration

Complete in-house integration



Program management / Engineering



CNC machining



Surface treatment



Painting



Assembly, kitting

4. Manufacturing capabilities:

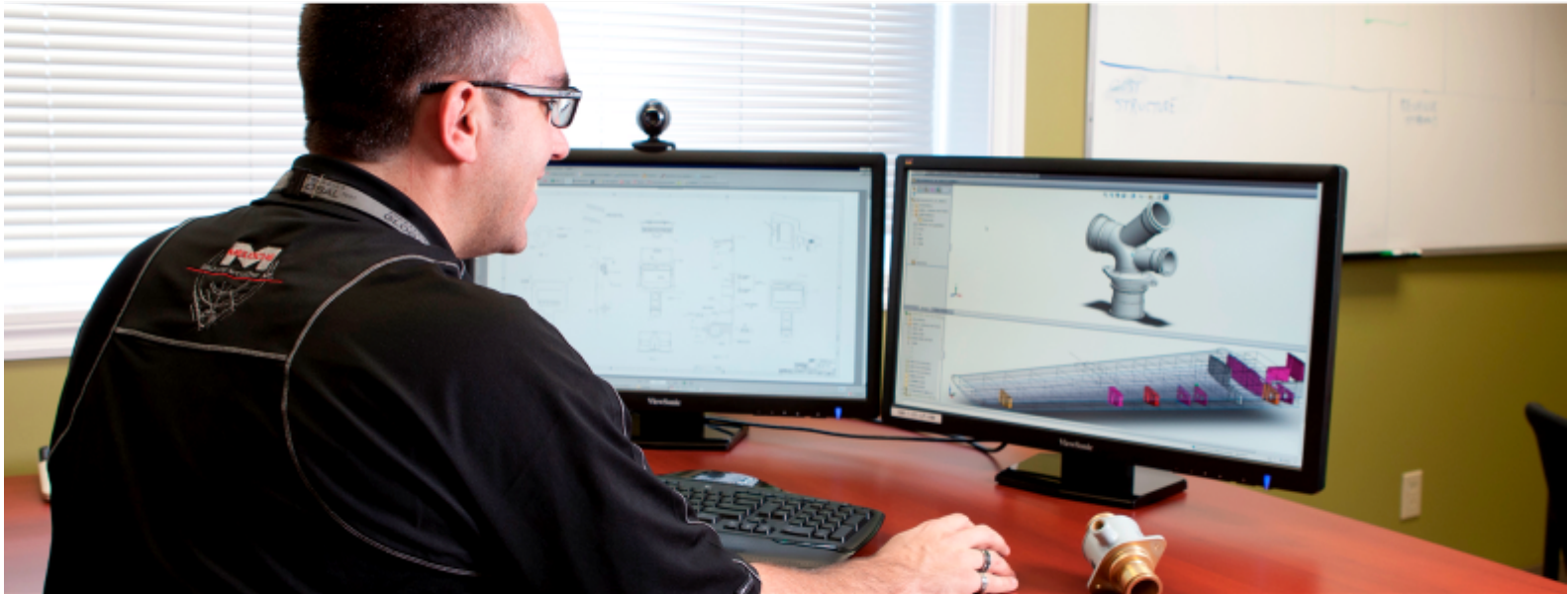
Program management



- ◆ PMO structure in place – N1 to N4 projects
- ◆ Monthly executive project reviews
- ◆ Program Manager (PM) oversees all aspects of the program
- ◆ Single point of contact for the customer
- ◆ Pro-active risk management

4. Manufacturing capabilities:

Engineering



- ◆ Concurrent engineering on new programs
- ◆ Design assistance for cost savings
- ◆ Casting-to-solid conversion

4. Manufacturing capabilities:

CNC machining



- ◆ Over 30 CNC Machining Centers
- ◆ 4 and 5 axis Milling Machines (DMG Mori, Mazak, Makino)
- ◆ CNC Turning (Mazak, Daewoo)
- ◆ Inspection equipments: CMM machines (Zeiss)
- ◆ Dimensions: Less than 30 inches

4. Manufacturing capabilities:

Chemical processing



- ◆ Chromic anodizing
- ◆ Sulphuric anodizing
- ◆ Thin-sulphuric anodizing
- ◆ Chromate conversion

4. Manufacturing capabilities:

Painting

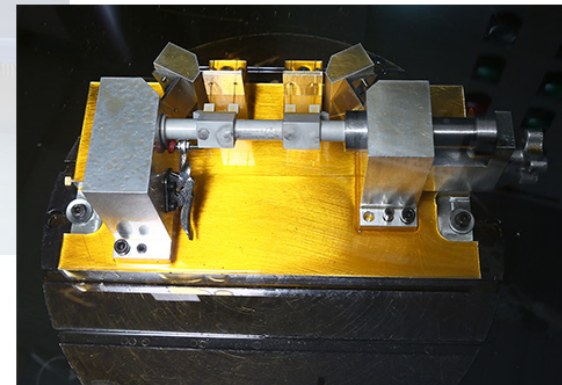
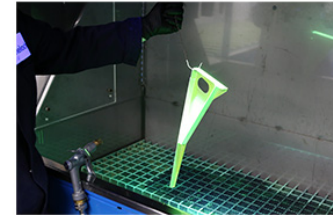
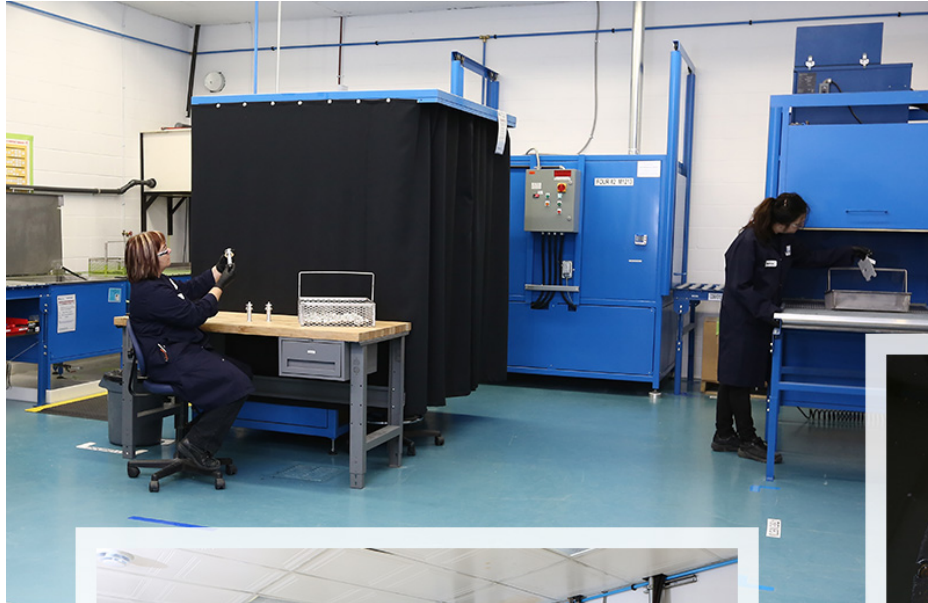


Accredited
Nadcap™

- ◆ Primer
- ◆ Top coat
- ◆ Power coat

4. Manufacturing capabilities:

Non-Destructive Testing

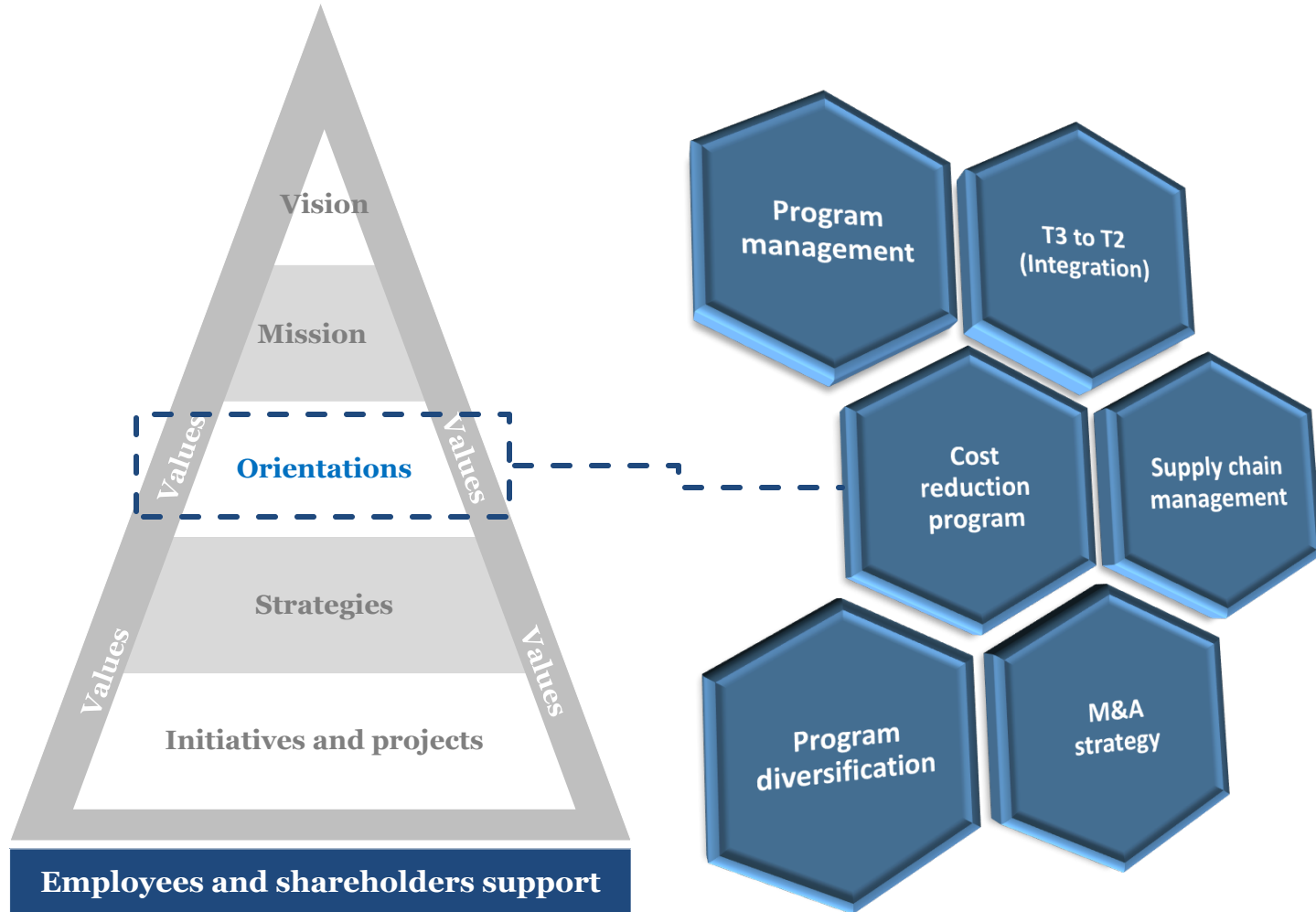


- ◆ FPI
- ◆ Flow target tests
- ◆ Pressure tests
- ◆ Cleanliness tests

5. Strategy

5. Strategy

6 strategic orientations



6. Contact information

6. Contact information



Hugue Meloche
President & CEO

hmeloche@melocheinc.com

450-371-4646 ext. 104



Marc Bigras
Vice President & COO

mbigras@melocheinc.com

450-371-4646 ext. 155



Jacques Labrie
Aerostructure programs
director

jlabrie@melocheinc.com

450-371-4646 ext. 149



Julie Racine
Aeroengine programs
director

jracine@melocheinc.com

450-371-4646 ext. 130

Thank you!



491 des Érables blvd,
Salaberry-de-Valleyfield,
Quebec, Canada J6T 6G3

T / 450.371.4646 **F /** 450.371.4957